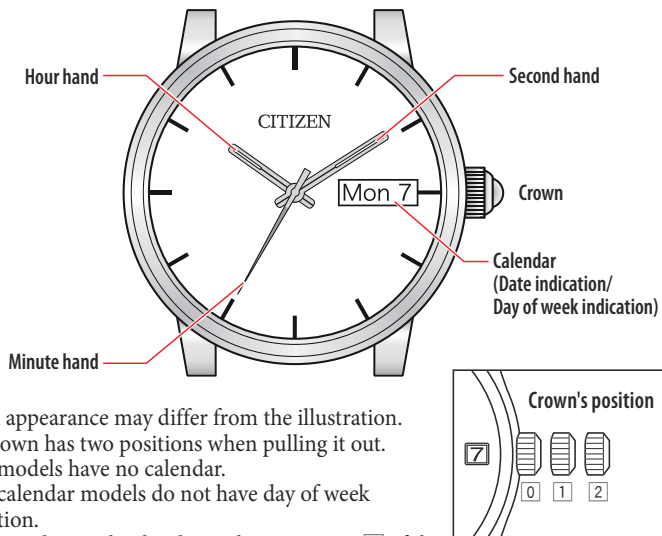


- To see details of specifications and operations, refer to the instruction manual:

41xx/82xx/83xx instruction manual 901x instruction manual 904x instruction manual

## Component identification

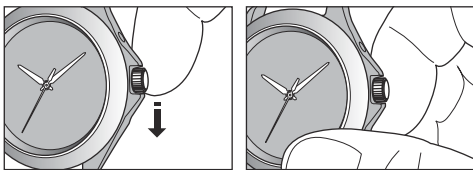


- Actual appearance may differ from the illustration.
- The crown has two positions when pulling it out.
- Some models have no calendar.
- Some calendar models do not have day of week indication.
- Models with no calendar do not have position 2 of the crown.

## Winding the mainspring

### Winding the mainspring manually

1. Push the crown in to position 0.
2. Turn the crown clockwise to wind the mainspring.



- Rub the lower side of the crown down below with the ball of a finger to turn it.

- When the watch stops, turning the crown about 40 times will wind the mainspring fully.
- Turning the crown further after full winding up does not damage the main spring.

### When using an automatic model

The mainspring is wound automatically by the oscillating weight moved with swings of your arm.

- If you do not move your arm much, the mainspring may not be wound sufficiently.
- Once the mainspring is wound fully, 41xx and 82xx will run for about 40 hours and 90xx about 42 hours.
- The mainspring is wound for running of 1 day of the watch when you wear it 8 hours or more a day.

## Setting the time and calendar (41xx, 82xx and 83xx)

### Setting the time

- Change of date indication shows it just became AM. Take care the time set is AM or PM.

1. Pull the crown out to position 2.  
(For models without a calendar: Position 1)  
  - Depending on the model, the second hand stops.
2. Rotate the crown to set the time.
3. Push the crown in to position 0 to finish the procedure.

### Setting the calendar

- Do not adjust the date indication while the watch shows 9:00 PM - 4:30 AM. Otherwise, the date indication may change incorrectly thereafter.
- Date indication adjustment is required on the first days of March, May, July, October and December.

1. Pull the crown out to position 1.
2. Rotate the crown counterclockwise to set the date.
3. Rotate the crown clockwise to set the day-of-week.  
  - For models with bilingual day-of-week indications:  
Day-of-week indication in each language appears alternately. Set the day in the language you prefer, and the day will be indicated in the language hereafter.
4. Push the crown in to position 0 to finish the procedure.

## Setting the time and calendar (901x and 904x)

- Do not adjust the date indication while the watch shows 8:00 PM - 2:00 AM. Otherwise, the date indication may change incorrectly thereafter.
- Date indication adjustment is required on the first days of March, May, July, October and December.

1. Pull the crown out to position 1.
2. Turn the crown clockwise to set the date to that which is one day before the day you want to set.
3. Pull the crown out to position 2.
4. Rotate the crown counterclockwise until the date you want to set is indicated.  
  - Change of date indication shows it just became AM.
5. Rotate the crown to set the time.  
  - Move the hands beyond 12 o'clock when you want to set time of PM.
6. Push the crown in to position 0 to finish the procedure.